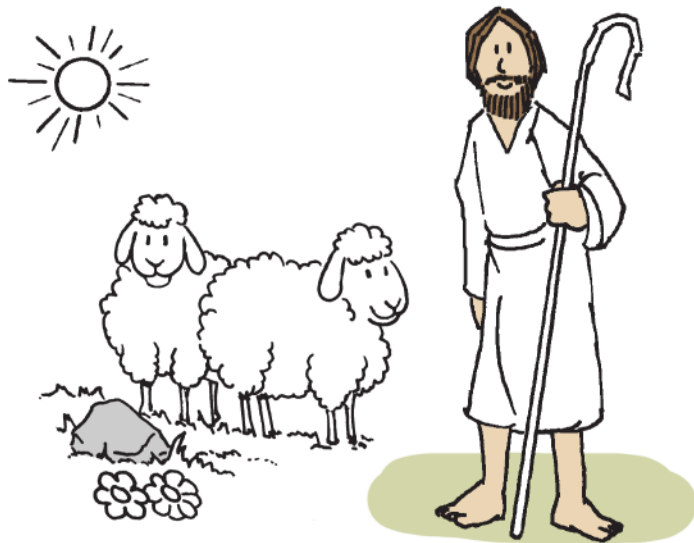
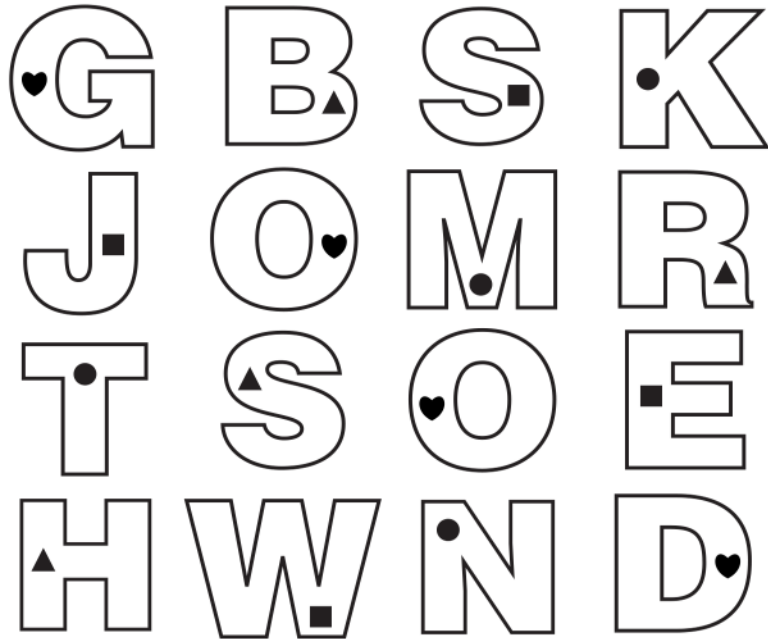


What kind of Shepherd is Jesus?

Shade in the letters that have a ♥.



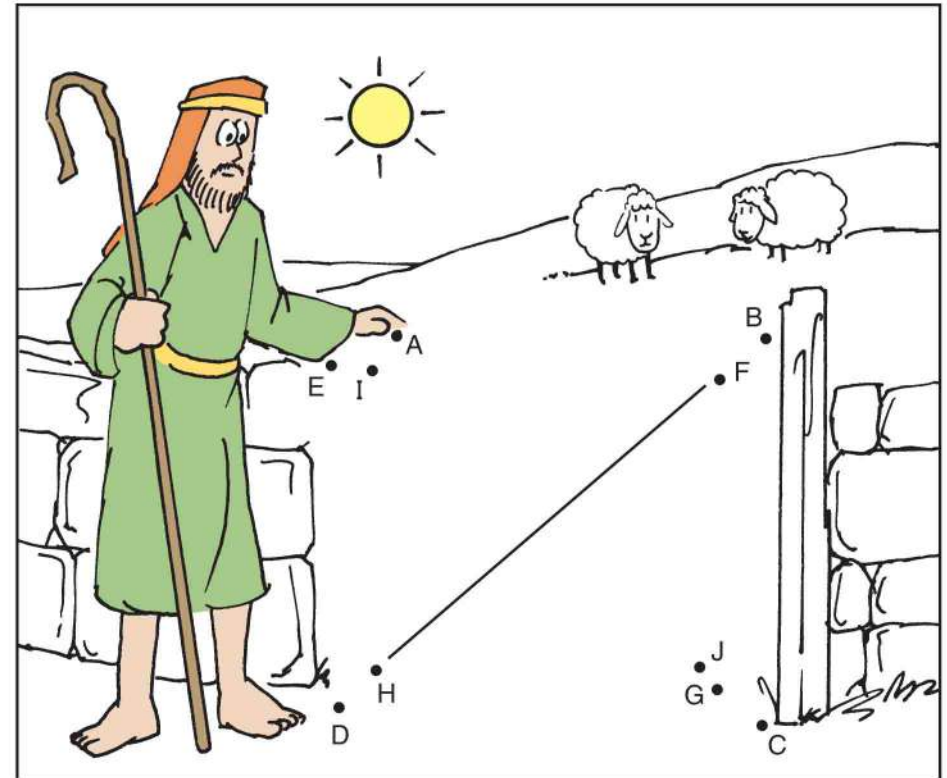
Ages 3+

April 25, 2026 • John 10:1-10

The Good Shepherd

The shepherd enters by the gate.

Connect the dots: A B C D E F G H I J



Willowdale Seventh-day Adventist Church

Children's Ministry

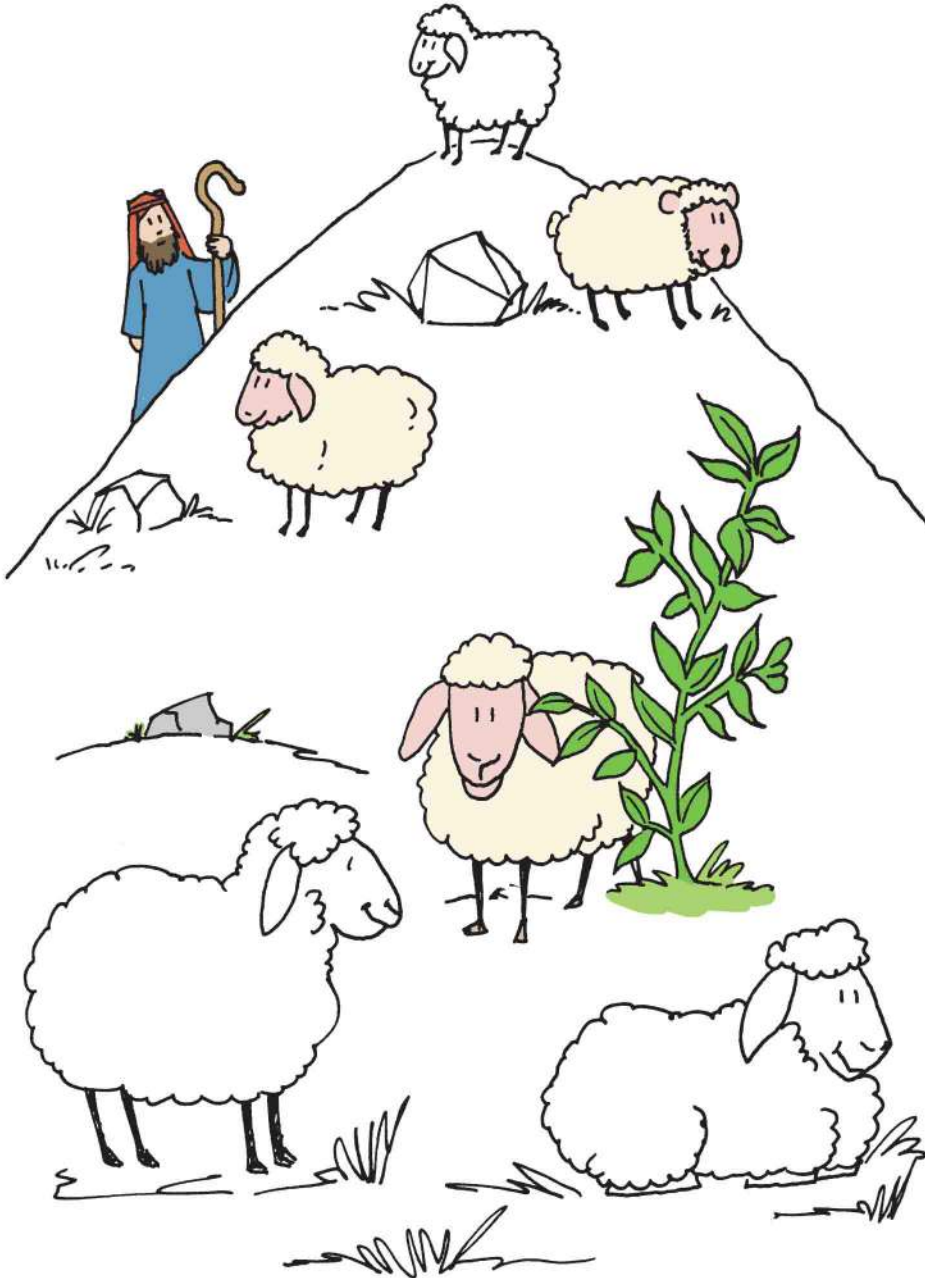
535 Finch Ave. West Toronto, ON M2R 3X2

Enter your **SECRET CODE** to unlock games @
games.childrensbulletins.com

SECRET CODE
QYCNY4

The sheep listen to the shepherd.

Count how many sheep. 6 or 7 ?



The shepherd knows each sheep by name.

Circle the matching sheep in each row.

